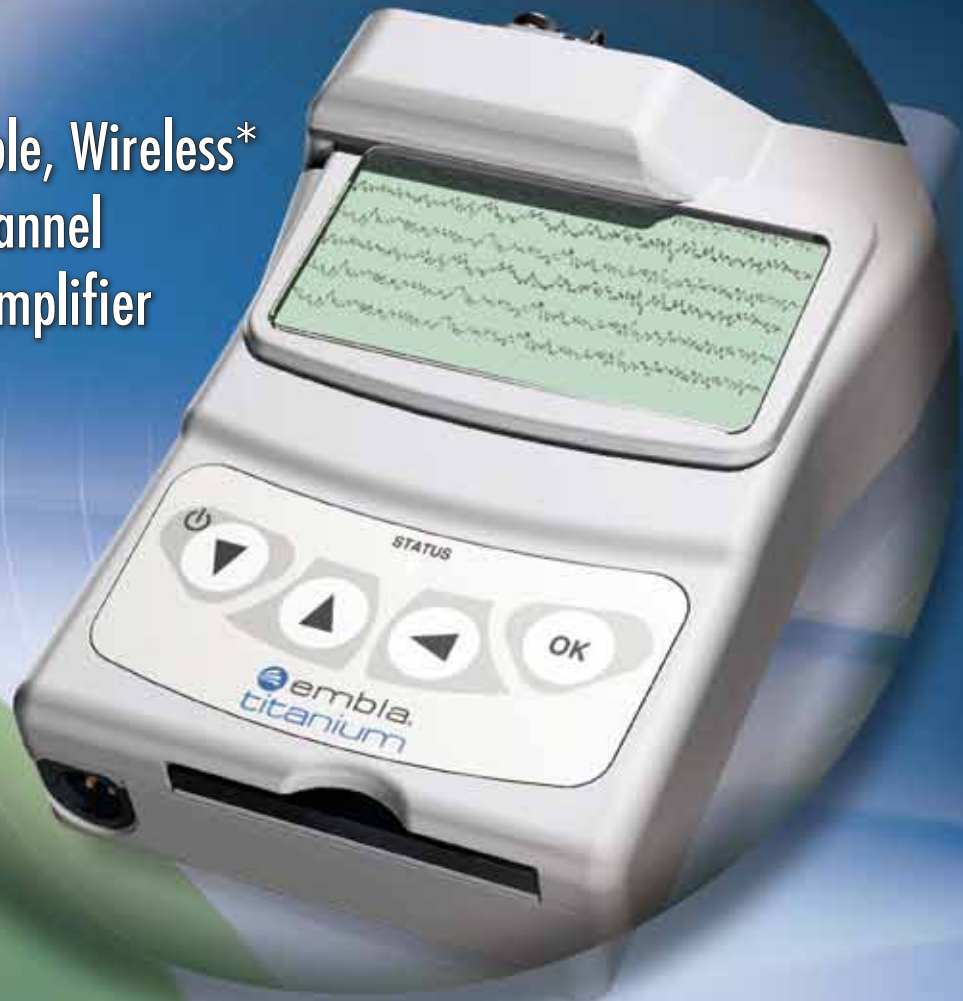


Embla[®] titanium

Portable, Wireless*
34 Channel
PSG Amplifier



The Embla titanium is a wireless, 34 channel amplifier that integrates precision engineering into a rugged, hand-held PSG system featuring a built in key pad and LCD for easy access to signal display, impedance check, and patient data entry. This flexible, lightweight amplifier is perfect for performing attended studies, whether online or wireless, and has a built-in flash memory card for ambulatory and unattended study environments, making it the ideal choice for recordings in the home, hospital or sleep clinic.

*Wireless feature is supported
in RemLogic™ 2.0 or higher

A BIG SOLUTION IN A SMALL PACKAGE

- Records up to 34 channels
- Integrated LCD screen for signal display, impedance information, and system status
- Integrated Features:
 - Oximetry
 - Nasal Pressure sensor
 - Differential Pressure sensor
 - XactTrace™ belts featuring AASM recommended RIP technology
- Lightweight at 7.5 oz (200g) yet rugged
- Designed for attended and remote testing environments
- DC inputs for interfacing up to two peripheral devices
- Backed by two-year hardware warranty

VERSATILE DATA ACQUISITION CHOICES

- Wireless real time recording
- Ethernet/USB interface
- Compact Flash Card
- Seamless transition between Ethernet/USB, wireless, and compact flash

COMPACT AND EASY-TO-USE DESIGN

- Streamlined single component design
- Color-coded input panel simplifies hookup
- Over 24 hours of recording time with two AA batteries

POWERFUL AND FLEXIBLE PSG SOFTWARE

- Industry leading and AASM compliant PSG software
- Innovative tools to save time and optimize study quality
- Designed around common tasks and natural workflow
- Additional derived signals including flow, lung volume and RMI when Embla XactTrace effort belts are used

THE EMBLA® SENSOR ADVANTAGE

- Complete line of sensors and supplies available 24/7 at www.shopembla.com
- Unparalleled accuracy with Embla XactTrace respiratory effort belts featuring XFlow™ - a reliable derived flow signal in the event of an absent or lost airflow signal
- Optimal sensor cable lengths available

Caution: U.S. Federal law restricts this device to sale by, or on the order of, a physician. The Embla quality system is certified in accordance with ISO 9001, ISO 13485:2003 and the Canadian CMDCAS, and fulfills the requirements of the European Directive and the U.S. Quality System Regulations for medical devices. Embla, Embletta, Sandman, and REMbrandt are registered trademarks of Embla Systems, Inc. RemLogic, Enterprise, titanium, N7000, S4500, SD20, SD32+, XactTrace, XFlow, and XSum are trademarks of Embla Systems, Inc.

titanium SPECIFICATIONS

CHANNELS:

- 12 x Referential AC Channels (EEG, EOG)
- 12 x Bipolar channels (EKG, EMG) can be converted to Referential channels for a total of 24 Referential channels
- 2 x Pressure Sensors
 - Nasal Pressure sensor
 - Differential Pressure sensor
- 3 x Oximeter
 - Plethysmogram
 - SpO₂
 - Heart rate
- 1 x Body Position
- 2 x Respiratory Effort Channels using Embla's XactTrace™ belts
- 2 x Non-isolated DC inputs*

* Embla's DC Isolation Box must be used for AC powered external devices

DERIVED TRACINGS

- Flow Limitation/Flattening (Nasal Cannula)
- R-R Intervals (EKG)
- Heart Rate Variability (EKG)
- XFlow™*
- XSum™*
- Tidal Volume*
- Phase*
- Respiratory Rate*
- Respiratory Mechanics Index (RMI)*

*When Embla's XactTrace Belts are used

SAMPLING RATES

User-selectable up to 512 Hz

Global Headquarters:
11001 West 120th Ave.
Broomfield, CO 80021 USA
t: 888 NO APNEA (888.662.7632)
303.962.1800
f: 303.962.1810
www.embla.com

European Representative:
Naritaweg 12 J
1043 BZ Amsterdam
The Netherlands
t: +31 20 3460 130
f: +31 20 3460 121