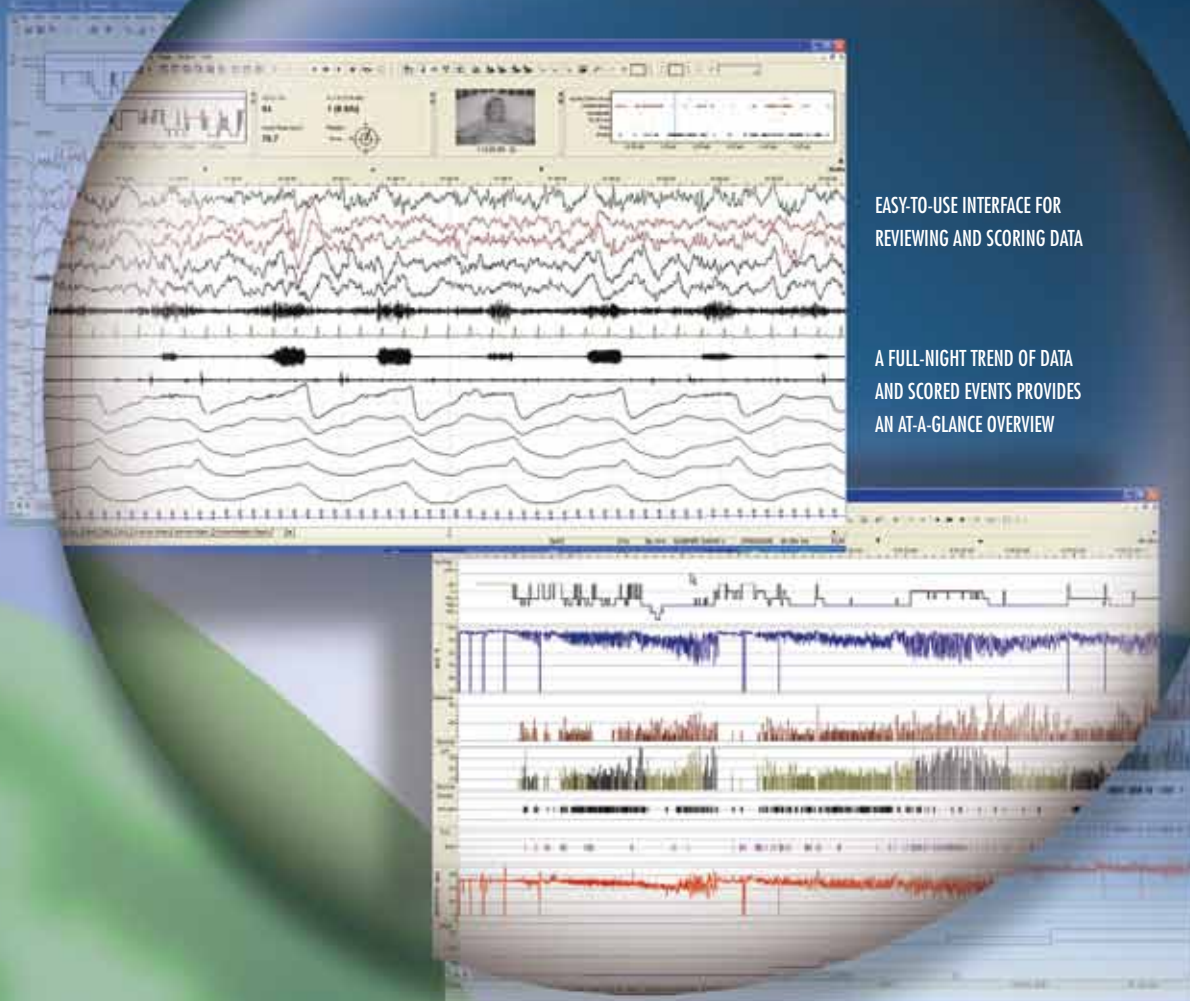


REMLOGICTM SLEEP DIAGNOSTIC SOFTWARE



EASY-TO-USE INTERFACE FOR
REVIEWING AND SCORING DATA

A FULL-NIGHT TREND OF DATA
AND SCORED EVENTS PROVIDES
AN AT-A-GLANCE OVERVIEW

Embla RemLogic sleep diagnostic software is a dynamic platform that offers the perfect combination of innovation and ease of use. RemLogic is ideal for all study types, ranging from the basic detection of obstructive sleep apnea to more complex studies that require additional EEG and DC channels. RemLogic exceeds the American Academy of Sleep Medicine (AASM) scoring criteria and contains an abundance of customizable options that allow you to tailor data acquisition and scoring preferences to best suit your needs. RemLogic also offers time-saving tools that streamline workflow and maximize efficiency.

POWERFUL AND FLEXIBLE SOFTWARE

- Score studies with more efficiency than ever with customizable right-click event scoring menus, single-click event placement, and channel-assigned event placement
- Make patient charting a paperless process with the Automated Patient Charting tool
- Routine EEG studies with photic flash, Chronograph tool, and easy-to-read reports*
- Enter and view patient observations in pop up box that appears at selected intervals
- Exceeds American Academy of Sleep Medicine guidelines for staging and events
- Microsoft® Windows Vista™ Business, Windows Vista™ Home Premium, and Windows XP™ compatible
- Seamless interface to select ResMed® sleep therapy devices
- Designed to compliment natural workflow during collection and scoring of data
- Data trends, single-sheet overview, and event lists for quick reference of raw data and scored events
- Derived signals such as XFlow™, XSum™ and RMI when Embla XactTrace™ respiratory belts are used

REPORTS

A number of predefined or customizable reports can be generated and exported including:

- Polysomnography report containing either software detected or user defined events
- Sleep stage report
- PLM, Titration, Pediatric, CAP (cyclic alternating pattern)
- Reports exported in multiple file formats including PDF, TXT, RTF, EDF, or ASCII II

REMLOGIC CPC MODULE**

The first technology of its kind is available exclusively with RemLogic PSG and PG software. This innovative module incorporates a clinically validated algorithm that:

- Optimizes staff efficiency
- Identifies sleep disordered breathing at a glance
- Identifies Complex Sleep Apnea prior to titration
- Predicts PAP compliance
- Offers an image of sleep quality that simplifies interpretation

Caution: U.S. Federal law restricts this device to sale by, or on the order of, a physician. The Embla quality system is certified in accordance with ISO 9001, ISO 13485:2003 and the Canadian CMCAS, and fulfills the requirements of the European Directive and the U.S. Quality System Regulations for medical devices. Embla, Embletta, Sandman, and REMbrandt are registered trademarks of Embla Systems, Inc. RemLogic, Enterprise, titanium, N7000, S4500, SD20, SD32+, XactTrace, XFlow, and XSum are trademarks of Embla Systems, Inc.

VERSATILE DATA ACQUISITION CHOICES FOR REMLOGIC***

- **Embla N7000™**: The result of over a decade of experience in the field of sleep medicine, this 60 channel amplifier offers a high degree of flexibility and impeccable signal quality to meet the demanding needs of clinical work and research. The N7000 amplifier represents the integration of advanced digital technology and precision engineering into an ergonomically designed PSG and EEG system.
- **Embla S4500™**: Features a simplified design that includes a color-coded input panel to optimize efficiency during the patient set up process. This 32 channel, dual component system requires minimal cabling, has been specifically designed to compliment workflow, and complies with AASM guidelines.
- **Embla titanium**: A wireless, palm sized, 34 channel amplifier perfect for attended studies, whether online or wireless, and ambulatory studies using a built-in flash memory card, making it the ideal choice for recordings in the home, hospital or sleep clinic.
- **Embletta® Gold™**: The world-standard in portable sleep testing, the Embletta Gold features optimal patient comfort and ease of use. This lightweight yet robust device fulfills the AASM requirements for Level III home testing devices.

THE BUSINESS OF SLEEP CAN BE MUCH EASIER

The Enterprise™ Sleep Business Management System is designed to optimize the efficiency of your sleep business by:

- Streamlining workflow
- Providing a single point of data entry
- Easily compiling useful reports
- Tracking metrics

Enterprise is HL7 compatible and features several tools to assist with the accreditation process.

* Optional feature for use with Embla supported Photic Stimulator and select PSG amplifiers

** Option available separately

***Embla N7000, S4500, titanium, and Embletta Gold include a two-year hardware warranty.

Global Headquarters:
11001 West 120th Ave.
Broomfield, CO 80021 USA
t: 888 NO APNEA (888.662.7632)
303.962.1800
f: 303.962.1810
www.embla.com

European Representative:
Naritaweg 12 J
1043 BZ Amsterdam
The Netherlands
t: +31 20 3460 130
f: +31 20 3460 121