

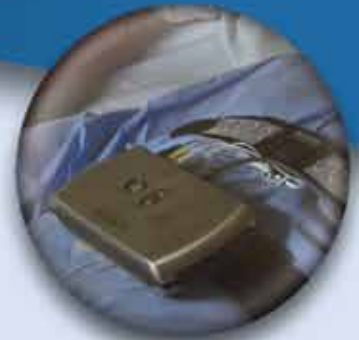
Embletta[®] GOLD

World standard home
sleep testing device



The world's most widely
accepted home sleep
testing device

The Embletta Gold is an affordable portable testing device that has gained worldwide acclaim for its reliability, flexibility, and ease of use. This AASM compliant device is lightweight yet rugged, and durable enough to withstand the demands of both the clinical and home testing environment, while maintaining its impeccable record for the high quality and high performance that sleep professionals worldwide have come to rely on.



SUPERIOR BY DESIGN

PATIENT AND USER FRIENDLY

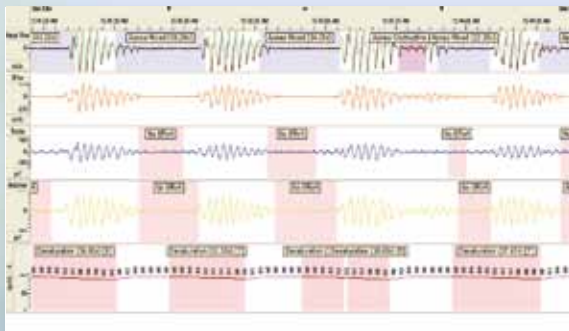
- Color coded inputs for easy application
- Lightweight and comfortable
- Low cost per patient at \$5 - \$7
- Programmable to record up to 3 consecutive studies
- DC input for added functionality
- Rechargeable battery

CLINICALLY ELITE

- AASM and CMS compliant
- Packaged with XactTrace™ RIP belts
- Accepted by clinicians worldwide

EASY TO USE REMLOGIC-E™ SOFTWARE

- Easy, reliable, Auto Score feature with editing capabilities
- Concise and customizable Sleep Report
- Optional RemLogic™ CPC module for advanced diagnosis at-a-glance
- Crisp signal quality



EACH EMBLETTA GOLD PACKAGE INCLUDES:

- Embletta Gold Portable Testing Device
- RemLogic-E™ Software
- Nonin® XPOD™ Oximeter with finger probe
- XactTrace™ Respiratory Effort Belts featuring AASM recommended RIP Technology (Single-Use or Reusable available)
- Sensor starter kit
- Patient Hook Up card and DVD

EMBLETTA GOLD SPECIFICATIONS

Weight:	218g (7.8oz)
Storage Capacity:	256MB
Recording Time:	24 Hrs
Dimension HxWxL:	0.9" x 2.8" x 5.5" (23mm x 71mm x 140mm)

Item No.	Name
1030404	Embletta Gold Package with Embla XactTrace Single-Use Belts
1030405	Embletta Gold Package with Embla XactTrace Reusable Belts

EMBLETTA GOLD

RECORDED CHANNELS:	Diagnostic	CPAP	AutoSet
Flow pressure (nasal cannula)	■		
Oral pressure (thermistor)	■		
Mask Pressure		■	■
XFlow* (with XactTrace RIP belts)	■	■	■
Snore (Nasal Pressure)	■		
Differential pressure	■	■	■
Abdominal movement (with XactTrace RIP belts)	■	■	■
Thoracic movement (with XactTrace RIP belts)	■	■	■
SpO ₂ average (oximeter)	■	■	■
SpO ₂ beat to beat (oximeter)	■	■	■
Pulse rate (oximeter)	■	■	■
Pulse waveform (oximeter)	■	■	■
Body position	■	■	■
Activity	■	■	■
Event marker	■	■	■
EKG	■	■	■
EEG	■	■	■
EOG	■	■	■
Auxiliary DC Input (0-1 volt)	■	■	■
Online	○	○	○
Autoset Interface			○

FEATURE

○ Optional

*Complimentary flow signal for studies without airflow sensors or as reliable backup

Caution: U.S. Federal law restricts this device to sale by, or on the order of, a physician. The Embla quality system is certified in accordance with ISO 9001, ISO 13485:2003 and the Canadian CMDCAS, and fulfills the requirements of the European Directive and the U.S. Quality System Regulations for medical devices. Embla, Embletta, Sandman, and REMbrandt are registered trademarks of Embla Systems, Inc. RemLogic, Enterprise, titanium, N7000, S4500, SD20, SD32+, XactTrace, XFlow, and XSum are trademarks of Embla Systems, Inc.

Global Headquarters:
11001 West 120th Ave.
Broomfield, CO 80021 USA
t: 888 NO APNEA (888.662.7632)
303.962.1800
f: 303.962.1810
www.embla.com

European Representative:
Naritaweg 12 J
1043 BZ Amsterdam
The Netherlands
t: +31 20 3460 130
f: +31 20 3460 121